

FETtec Race Wire 6

Manual

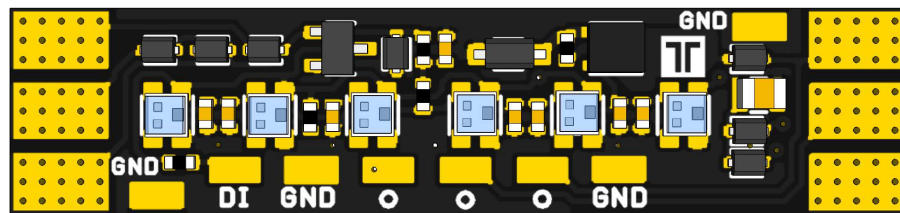


Table of Contents

Introduction.....	3
Features:.....	3
Dimension (in mm).....	3
Connection Diagrams.....	4
FETtec ESC connection:.....	4
Combination of two FETtec Race Wire 6:.....	4
Alternative connection for use with ESC's that dont support FETtec Race Wire 6:.....	4
LED stick usage.....	5
Configuration.....	5
Set up with FETtec OSD.....	6

Introduction

Thank you for purchasing the FETtec Race Wire 6.

Features:

- 6 WS2812 2020 RGB LEDs, bright and every color choosable
- easy handling
- only one additional GND-wire needed when connected to FETtec ESC
- low resistance
- for use with 3 - 6s
- 2 FETtec Race Wire 6 can be combined on one arm
- configurable via FETtec Configurator / KISS GUI, Transmitter and OSD

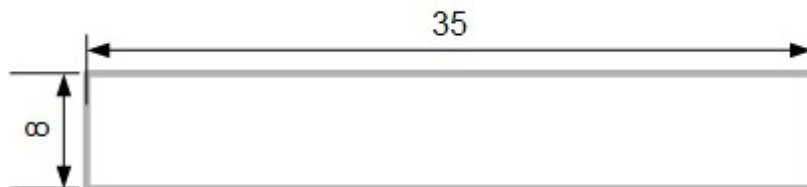
The FETtec Race Wire 6 does not need any voltage regulator or RGB LED connection.

The color gets transmitted from the FETtec ESC over the three motor wires.

The FETtec ESC receives the chosen color over Onewire or Dshot from the FETtec/KISS FC.

Isolation between FETtec Race Wire 6 and conducting frame material (carbon, aluminum) are still needed!

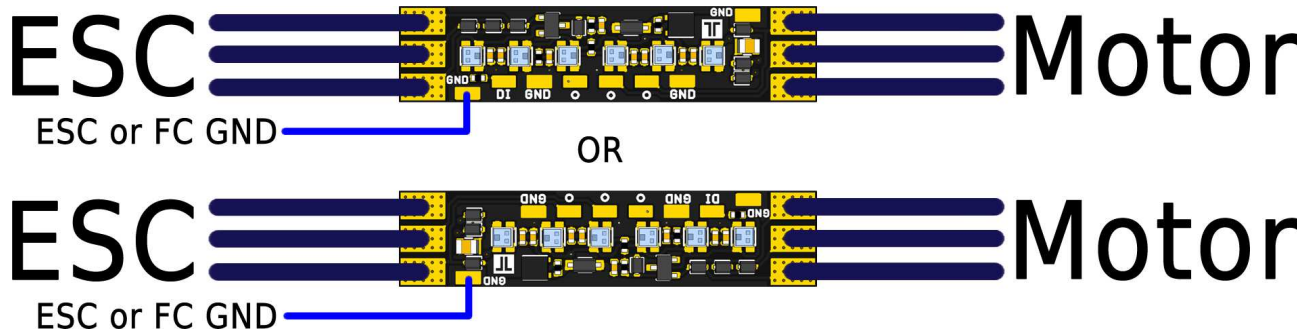
Dimension (in mm)



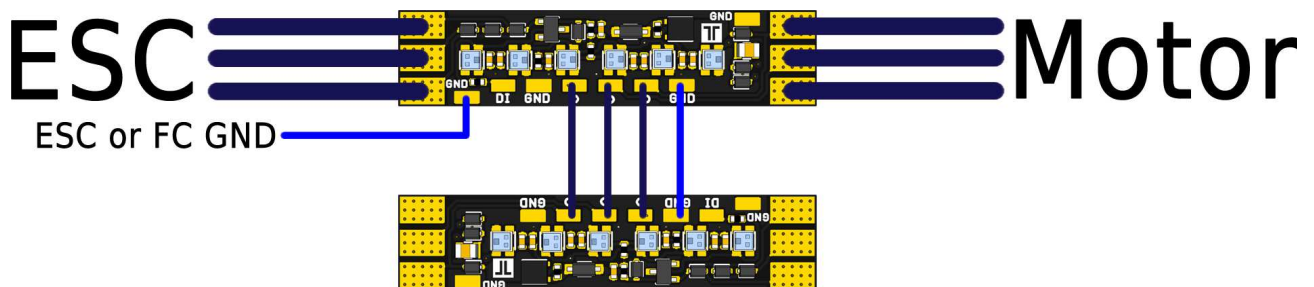
Weight: 1g

Connection Diagrams

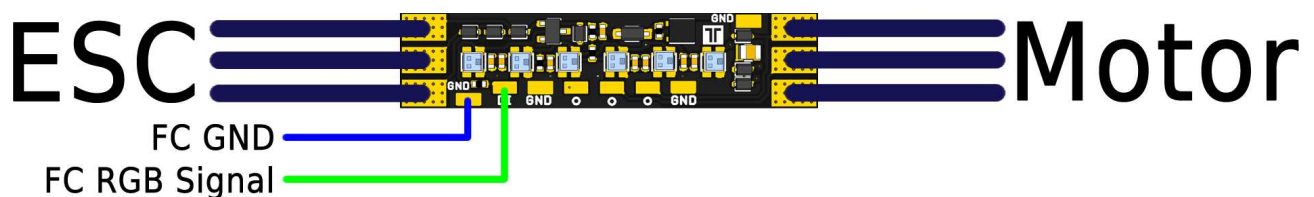
FETtec ESC connection:



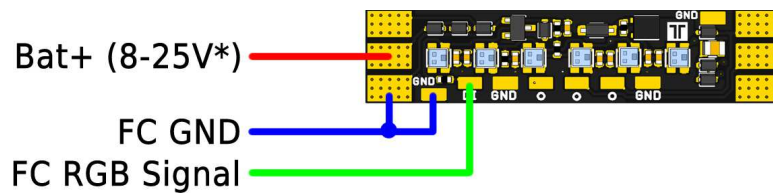
Combination of two FETtec Race Wire 6:



Alternative connection for use with ESC's that dont support FETtec Race Wire 6:



LED stick usage



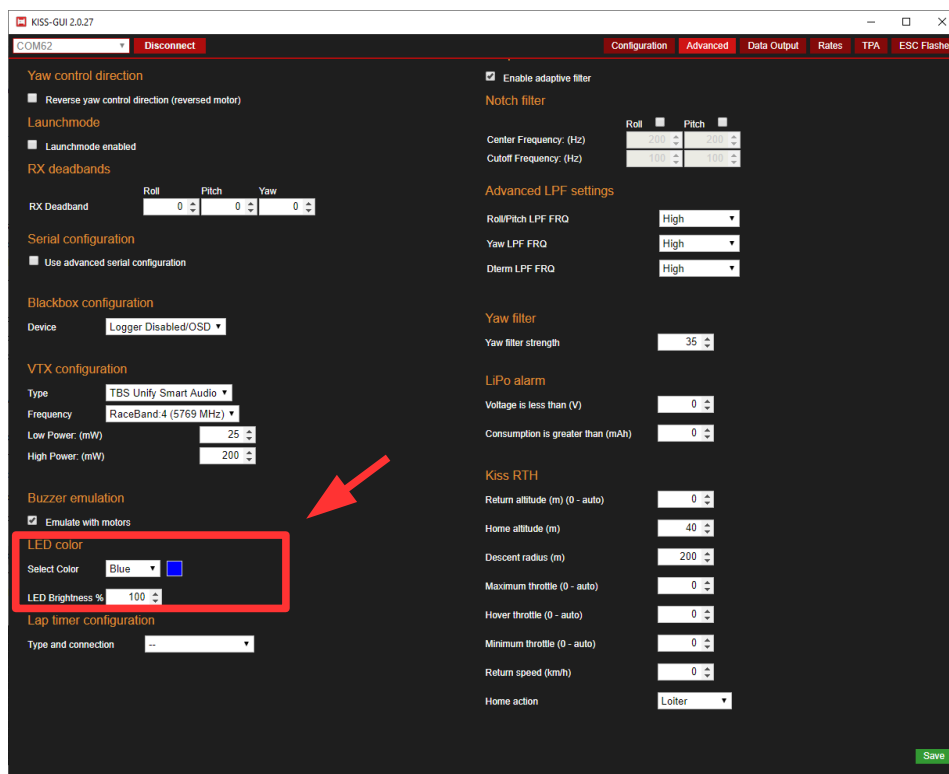
(*) 8-16V with no active cooling
8-25.2V when mounted in airflow of the propellers, or reduced brightness.

Configuration

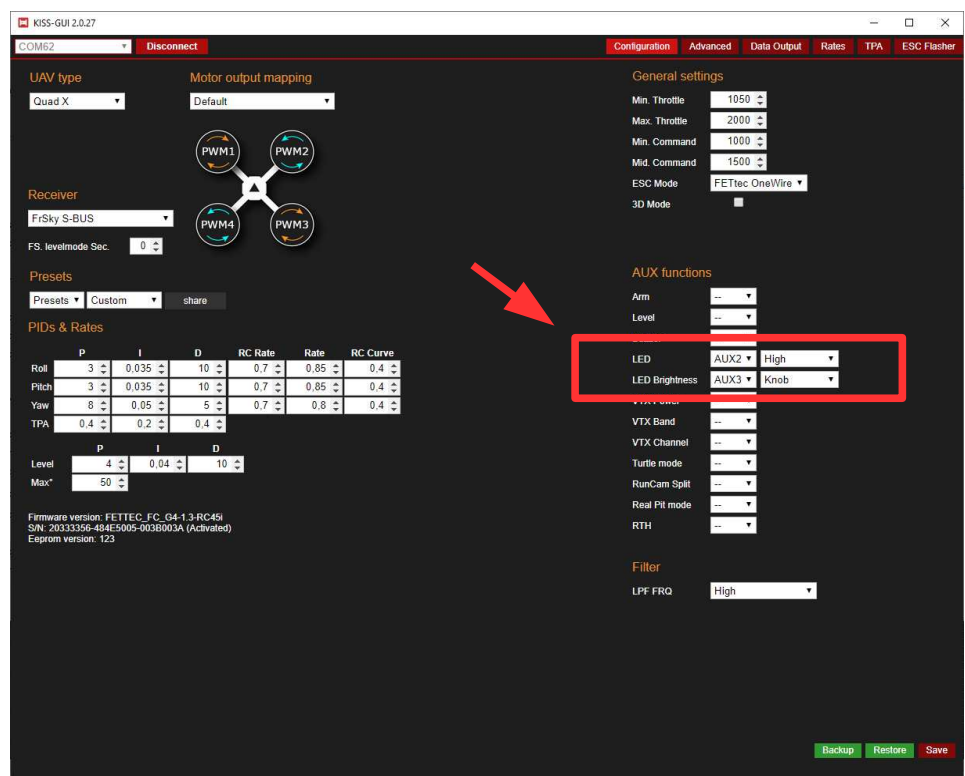
If nothing is configured the FETtec Race Wire 6 light up in light blue (FETtec blue).
Color can only be changed when motors are not running.
After disarm the FETtec Race Wire 6 will be off for a second.

In KISS GUI:

To set up a custom color, simply use the KISS firmware RGB LED settings (color and brightness)



It is also possible to set up switches or knobs to change the colors and brightness over the transmitter



Set up with FETtec OSD

LED color can also be changed over the FETtec OSD

