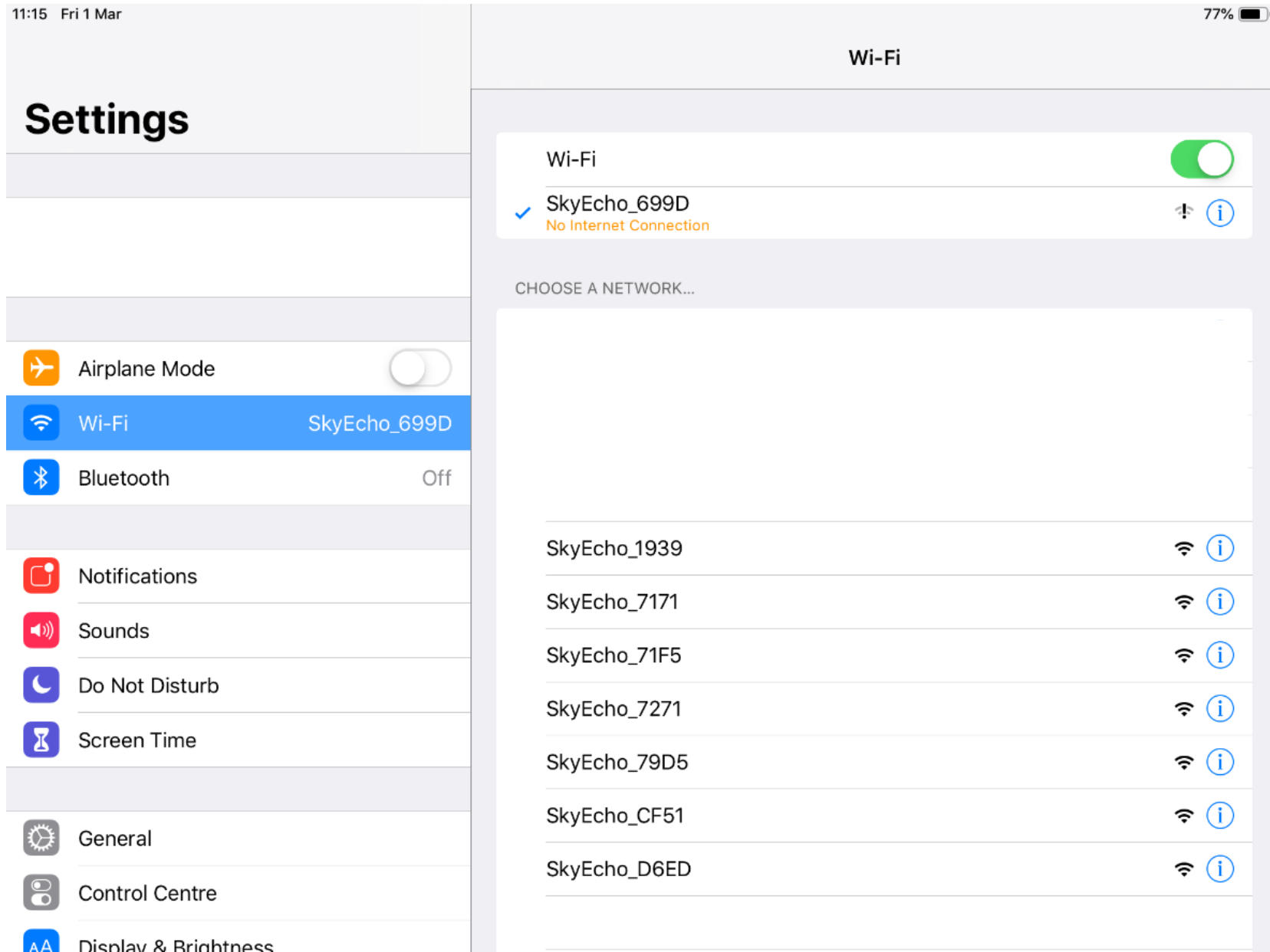


Configuration

SkyEcho 2 - SkyDemon



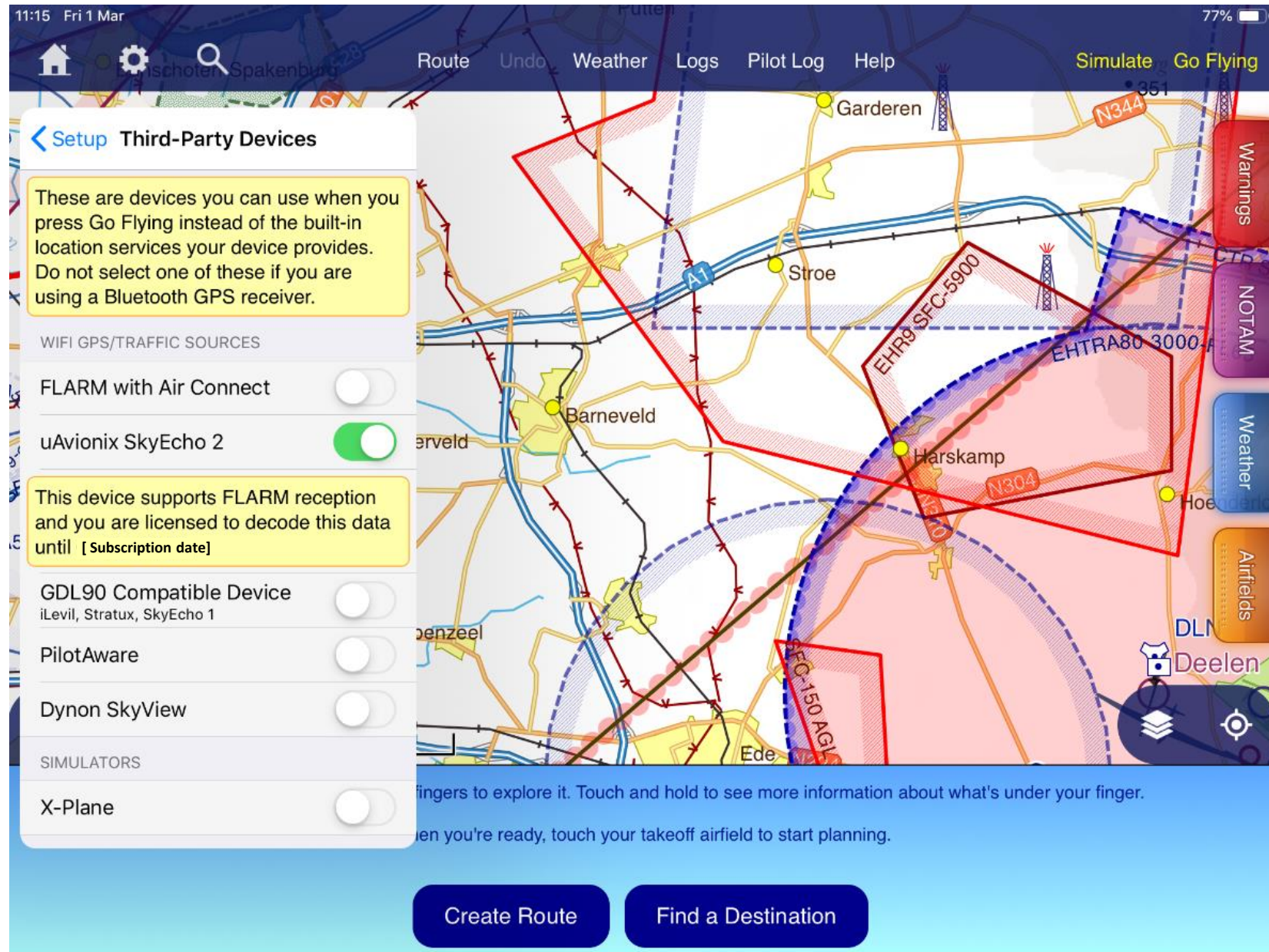
First make a WIFI connection between SkyEcho 2 and your tablet or smartphone according to SkyEcho 2 User and Installation Guide



Configure SkyDemon
Go to
Setup Third-Party Devices

Switch on
uAvionix SkyEcho 2

When you subscribed to
SkyDemon FLARM
reception you see this.



In order to see FLARM traffic you must enable FLARM in the Receiver Mode.

ADS-B Setup



Configuration loaded.

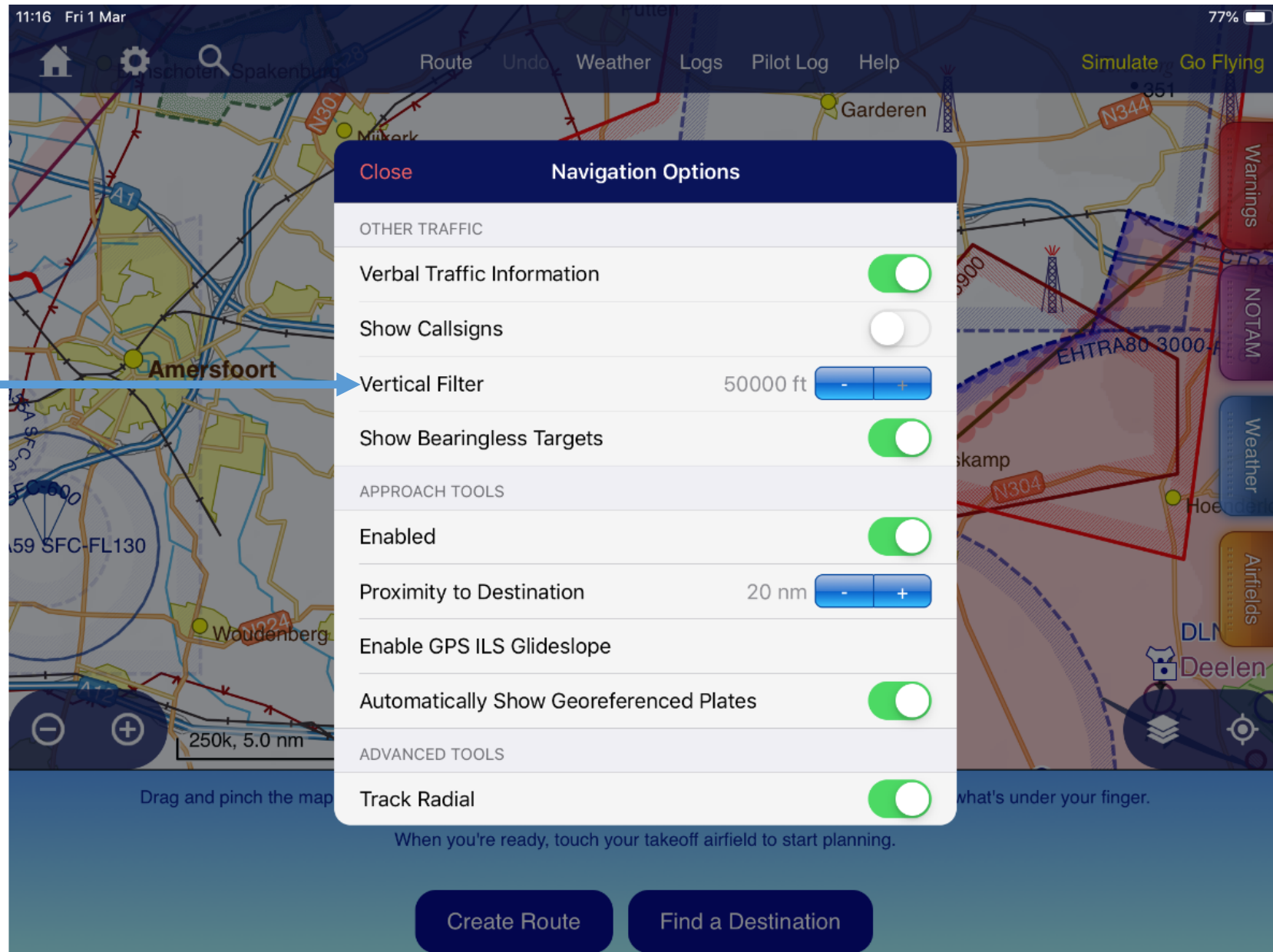
Setup

1090ES Transmit:	<input type="checkbox"/> Enable	Receiver Mode:	<input type="radio"/> UAT <input checked="" type="radio"/> FLARM <input type="radio"/> 1090ES
Region:	<input checked="" type="radio"/> UK/EU <input type="radio"/> AUS		
ICAO Address (hex):	<input type="text" value="XXXXXX"/>	Callsign:	<input type="text" value="CALLSIGN"/>
Emitter Category:	<input type="text" value="Light"/>	VFR Squawk:	<input type="text" value="7000"/>
ADS-B In Capability:	<input checked="" type="checkbox"/> 1090ES <input type="checkbox"/> UAT	V _{so} (knots):	<input type="text" value="65"/>
Aircraft Length:	<input type="text" value="L ≤ 15 m"/>	Aircraft Width:	<input type="text" value="W ≤ 23 m"/>
Lateral GPS Offset:	<input type="text" value="Center"/>	Longitudinal GPS Offset (m):	<input type="text" value="0"/>

Apply

NOTE: Based on EU legislation it is not allowed to operate Low Power ADS-B Out in Europe except in the UK based on CAP 1391. You need to request exemption from your local CAA in order to enable 1090ES Transmit pending EU legislation on Electronic Conspicuity Devices.

Since there is not yet much ADS-B traffic in the lower airspace you might want to increase the Vertical Filter in Setup Navigation options

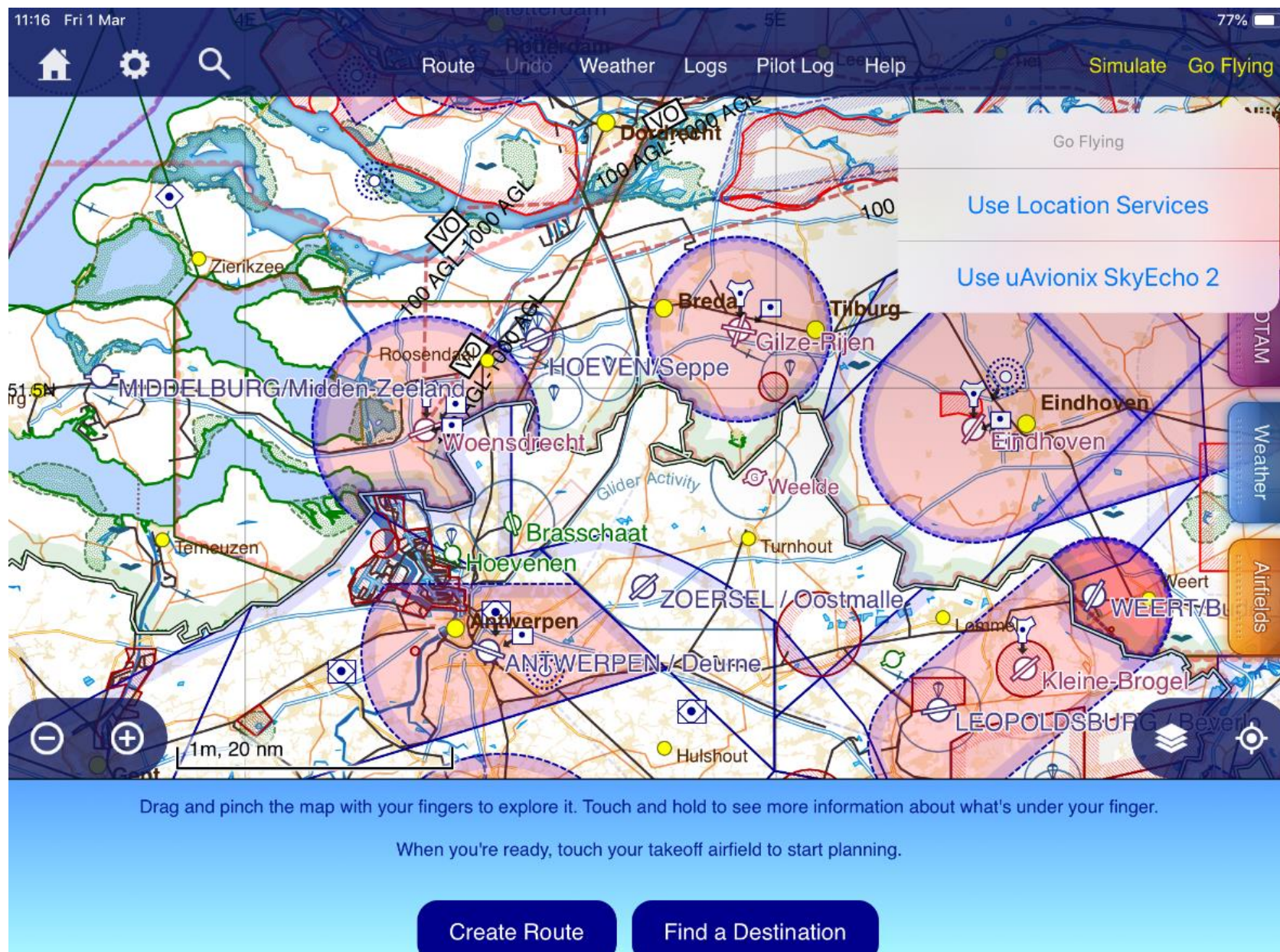


Before go flying, make sure that SkyEcho 2 is mounted according the SkyEcho 2 User and Installation Guide.

Also make sure that SkyEcho 2 has a GPS FIX, GPS LED should be green.



When you have a GPS FIX
You press “Go Flying”
and
“Use uAvionix SkyEcho 2”



You will then go into flying mode and see live ADS-B traffic and when you have activated FLARM reception subscription also FLARM traffic.

